



2020 Annual Report

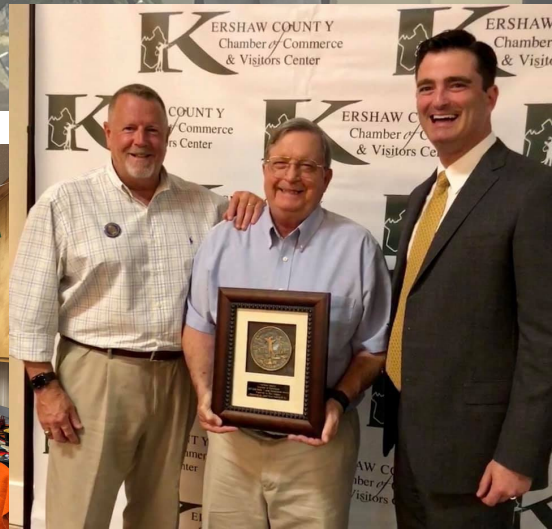
ALPHA BEHAVIORAL HEALTH CENTER

ALL LIFE'S PROBLEMS HAVE ANSWERS



EXECUTIVE DIRECTOR PAUL NAPPER RETIRES AFTER 40 YEARS OF SERVICE

Paul Napper retired on December 2020 after 40 years of service and dedication to our three county service area: Kershaw, Chesterfield and Lee County. Mr. Napper began his career as a coordinator for what was then The Commission for Alcohol and Drug Abuse Services in Kershaw County. Working his way up to the position of Executive Director. Mr. Napper over the years grew the agency to what is now a three county service area with a total of 25 + employees with a budget of over 2 million dollars. His vision and dream of having a new building became a reality just prior to his retirement. Throughout the years Mr. Napper represented the agency by serving on Boards and commissions which helped bring awareness on the services ALPHA provides. We thank Mr. Napper for his many years of service and dedication to our communities and for his vision and passion for helping others. An Interim Director was hired until the position for Executive Director is filled.



OUR MISSION, VISION AND PHILOSOPHY

MISSION STATEMENT-PURPOSE

ALPHA seeks to provide quality services to individuals and their families/support systems to reduce problems associated with substance misuse/use, behavioral/mental health needs and co-occurring disorders, in an accessible outpatient setting.

- Provide the best services available for each person and their families/support systems in need prevention, intervention, treatment, and recovery for substance misuse/use, behavioral/mental health needs and/or co-occurring disorders.
- Incorporate each person's abilities, strengths, needs and preferences in their services.
- To facilitate healthy lifestyle changes.
- Utilize Best Practices

VISION STATEMENT

To deliver a complete range of needs-based, effective services in an efficient manner to the citizens of Kershaw, Chesterfield and Lee counties.

TREATMENT PHILOSOPHY

ALPHA believes that substance misuse/use, behavioral/mental health needs, and co-occurring disorders, are preventable, manageable, and treatable. ALPHA offers an individualized and/or group approach to the recovery from substance misuse/use, behavioral/mental health needs, and co-occurring disorders,

OUR BOARD OF DIRECTORS

We want to thank our Board of Directors for their dedication and commitment to serve our communities.

**Leon Prosser-Chairman
Dr. William "Dub" Moore
Lon Outen
Rev. Steve Lee
Kevin Tidwell
Vera Ferguson**

CHESTERFILED COUNTY ADVISORY BOARD OF DIRECTORS

**Larry Brown
Dr. Ben Burnett
Dennis "Faye" Davis
Johnny Davis
Rev. Robert Harrell
Rev. Kenneth Tate**



OUR SERVICES

PERSONS SERVED

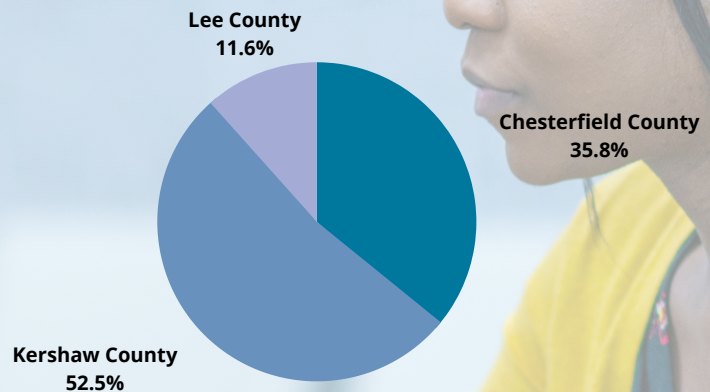
ALPHA provided treatment services in a three county service areas- Kershaw, Chesterfield and Lee Counties.

1,808

TOTAL PERSONS SERVED

ALPHA offers prevention, intervention, and treatment programs designed to reduce the impact of misuse/use of substances as well as address the behavioral health needs of individuals in Kershaw, Chesterfield, and Lee counties. Among the services offered at the agency are:

- Community Based Treatment
- ADSAP-Alcohol Drug and Substance Abuse Program
- Drug Court
- Gambling Addiction
- Youth Arbitration Program
- Drug Testing Services
- Domestic Violence Program



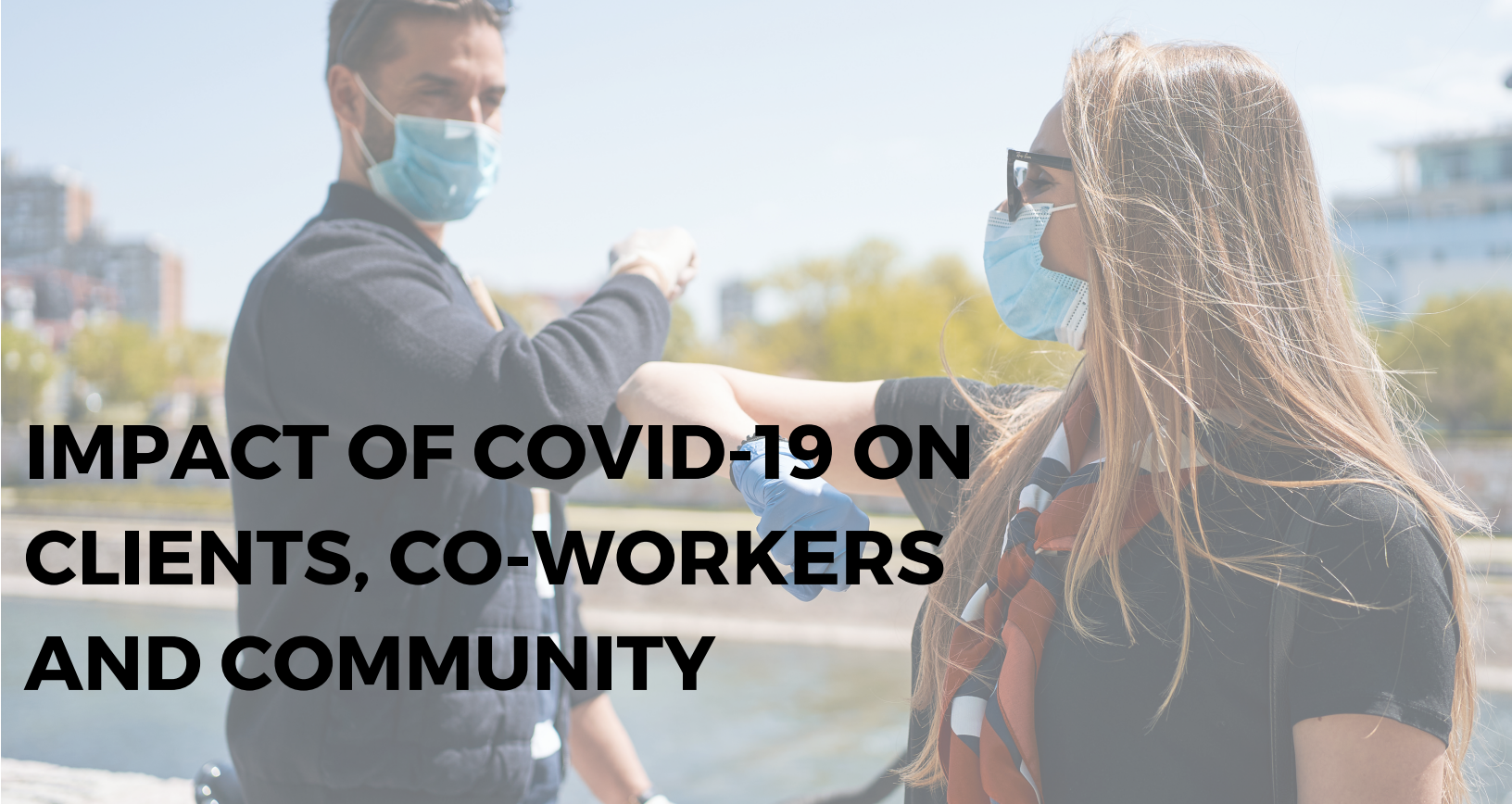
OTHER SERVICES

DRUG TESTING SERVICES

Our drug testing services are made available to the community. Some of the reasons for being drug tested may include the following: workplace, Department of Transportation, custody cases, adolescents and criminal justice system. The different types of drug test available are as follows: urine screening, hair follicle screening, saliva/alcohol screening, drug-free workplace assistance. There is a fee for these services.



THESE NUMBERS INCLUDE TEST ADMINISTERED FOR BUT NOT LIMITED TO INDIVIDUALS , COURT REQUEST, EMPLOYER TESTING AND MUCH MORE

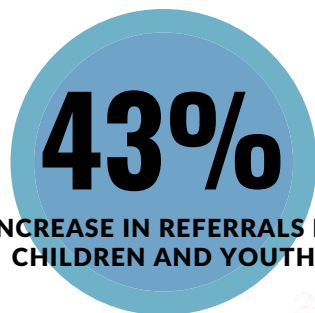


IMPACT OF COVID-19 ON CLIENTS, CO-WORKERS AND COMMUNITY

On March 10, 2020, Kershaw County was among the first counties impacted by COVID-19. ALPHA Health and Safety committee along with the agencies management team began taking steps to develop and implement new guidelines and policies recommended by (CDC) the Center for Disease and Control and (SCDHEC) SC Department of Health and Environmental Control. The safety and wellness of our clients co-workers and community were our priority while still finding new ways to continue delivering services to those in need.

TELECOUNSELING TELEPHONIC SERVICES

While COVID-19 has provided us with a number of obstacles to overcome, it has also provided us with an opportunity to make our services more accessible through telehealth. Our clients are now able to utilize technology for their appointments for both group and individual sessions. As we returned back to in office appointments, we have continued to offer telehealth services as needed. Our goal is to keep our clients engaged and continue to make progress towards their goals without the barriers of transportation or feeling at risk due to health concerns.



PEER SUPPORT PROGRAM

ALPHA is proud to provide Peer Support services for clients in recovery. A Peer Support Specialist utilizes their own life experiences in assisting others to be successful on their road to recovery. Through shared understanding and respect, they try to help people stay engaged in the recovery process and problem solve the many challenges a client may have experienced. In spite of COVID-19 the agency was still able to make these services available. The agency hired a Certified Peer Support Specialist to work with our clients.



MAT(MEDICATION ASSISTED TREATMENT) PROGRAM

The MAT (Medication Assisted Treatment) is a long term program designed to provide a whole patient approach to the treatment of substance use disorders. The program uses FDA approved medications in conjunction with counseling and behavioral therapies.

ALPHA is in its 2nd year of the program. We will continue to bring awareness and education on the benefits of our program.

502

PARTICIPATED IN THE PROGRAM

COMMUNITY OUTREACH AND PREVENTION

Our current Prevention Department consists of a Director of Prevention and a Prevention Specialist, both of whom are Senior Prevention Specialists certified through the South Carolina Association of Prevention Professionals and Advocates. The needs of the community are identified using the Strategic Prevention Framework planning process. As a result of this process ALPHA Prevention Program works hard to develop activities and programs to meet the needs of the community.

In 2020, COVID-19 caused many challenges in the way our services were delivered. We were not able to use the traditional methods to provide prevention services. Our team of professionals went to work planning innovative ways in spite of the pandemic to reach out to our communities.

DETERRA PACKETS DISTRIBUTION

Deterra packets were distributed to clients and made available to the community. Packets were also given during the Drive Thru Health Fair and other events.

DRIVE-THRU HEALTH FAIR

Community partnering agencies participated in our Drive thru Health Fair. Those who participated were given a ALPHA bag which contained numerous resources and other giveaways. Some of the items given were mask, sanitizer, food, information on where to find assistance for health and mental health.

SCHOOL PRESENTATIONS

Presentations were made to students in the elementary middle and high school in each of the county areas. Topics included vaping, tobacco, drugs and other behavioral health issues.

COMMUNITY THAT CARES SURVEY AND ADULT COMMUNITY SURVEY

Surveys were targeted for youth and adults to obtain a variety of information related to substance of misuse/use. Information received will be used to evaluate future gaps and needs.

475

125

4,000 +

2,242



SOCIAL MEDIA OUTREACH

During the pandemic, social media outlets were utilized to provide up to date information on available services and provide public awareness around substance misuse/use issues, data and resources. We provided weekly posts and reached an average of 500 people with each post. There were 177 post in FY 20.



177

POST FY 20

500

PEOPLE REACHED PER POST

88,500

TOTAL OF PEOPLE REACHED

HISPANIC PROGRAM

72

INTERPRETING SESSIONS

Our Hispanic Program is made possible through South Carolina DAODAS Prevention grant that allows us to provide Interpreting/Translation services as well as access to resources for LEP clients for the nine county area-301 system county agencies. COVID had a significant impact on the outreach and activities planned for this year. We were still able to provide the following services:

- **INTERPRETING/TRANSLATION SERVICES**
- **HISPANIC MOVIE NIGHT**
- **WORKSHOPS FOR HISPANIC PARENTS AS REQUESTED BY THE SCHOOLS**
- **HISPANIC HERITAGE MONTH AWARENESS AND ACTIVITIES**

Some of these activities were unfortunately suspended due to COVID-19 Stay at Home orders directed by our states guidelines and CDC and SCDHEC guidelines.

FINANCIAL STATEMENT

ALPHA's operational budget for FY 20 was \$2,686,553 . Our revenue/income sources came from a variety of funding sources. The ALPHA Center is committed to financial transparency and accountability. The agency contracts with an independent firm to conduct an Annual Financial Audit. Detailed information on our current financial position can be provided upon request.

FISCAL YEAR 2019-2020

\$2,686,553

OPERATING BUDGET

REVENUE

\$2,792,636

EXPENSES

\$2,750,288

SCHOLARSHIPS^{100%} AWARDED FOR CLIENT SERVICES^{100%}

ALPHA received funding from South Carolina Department of Alcohol and Other Drug Abuse services to assist those who are uninsured or can't pay for services. We are happy that this year we were able to provide services to 704 clients that otherwise may have not been able to receive assistance.

704

RECIPIENTS OF FINANCIAL
AID FOR SERVICES



The ALPHA Behavioral Health Center

Main Office

208 King St.

Camden, SC 29020

803.432.6902

The Lee Center

108 East Church Street

Bishopville, SC 29010

803.484.6025

The ALPHA Behavioral Health Center

1218 East Boulevard

Chesterfield, SC 29709

843.623.7062

www.alphabehavioralhealthcenter.org

Like Us on Facebook!

